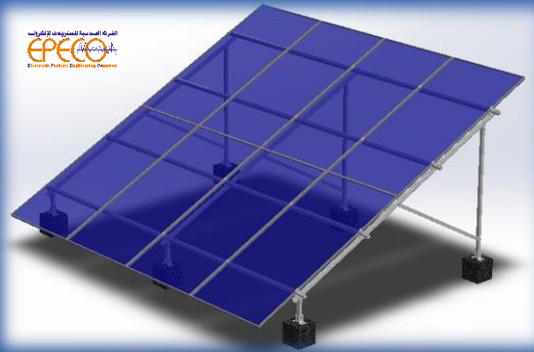


EPECO

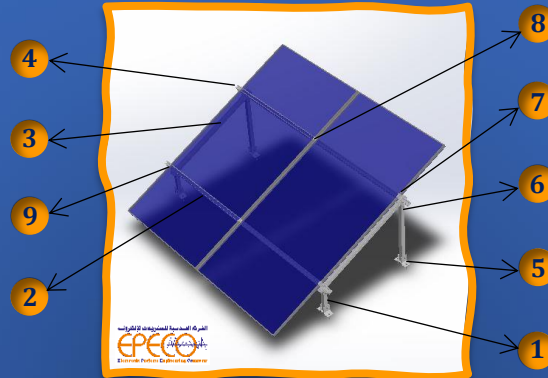
Electronic Projects Engineering CO.



Solar Mounting Structure

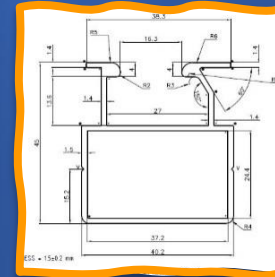
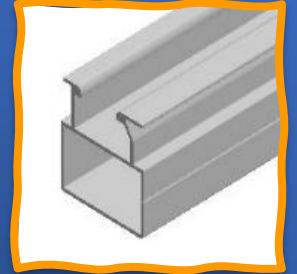
Our mounting structure parts and components can be used in different locations with different features.

- Material: Aluminum.
- M. snow load: 1.4 KN/m².
- Max wind load: 60 m/s (216 km/hr).



2 Lower Rail

- The lower rail is designed to work with upper rail to shape the structure.
- Anti-corrosive, wear-proof with 10 years warranty.
- Can be cut in cut to size as mounting projects.
- Easy installation & heavy duty qualified.



EASTWATT

For Renewable Energy Solutions

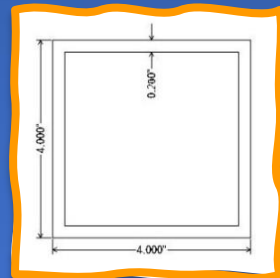
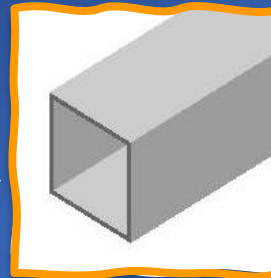


Please scan me



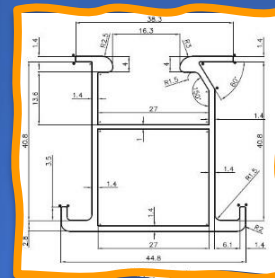
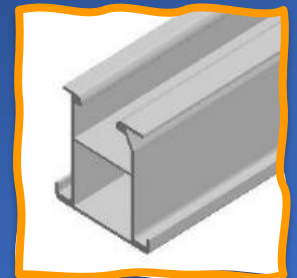
1 Stand Rail

- Solar panel stand (square rail or tube rail) are mostly made from aluminum.
- Its dimension 40×40×2 mm.
- Also, there is 3 mm thickness.
- The finishing involves a rust proof, which ensures that the stands do not rust easily, even when exposed to the elements.



3 Upper Rail

- The upper rail is designed to work with lower rail to shape the structure.
- Anti-corrosive, wear-proof with 10 years warranty.
- Can be cut in cut to size as mounting projects.
- Easy installation & heavy duty qualified.



Office: Villa 42 Mohamed Refaat St. Sheikh Zayed
Factory: Abu-Rawash Industrial Area - Giza - Egypt



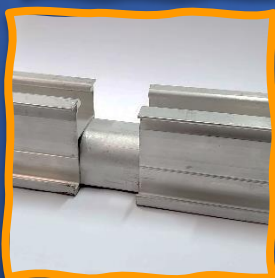
Tel: +202 38506802 • Fax: +202 38514901
+20 122 217 7746 • +20 106 107 1711



epeco@link.net • www.eastwatt.com

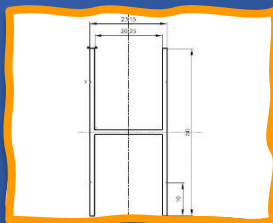
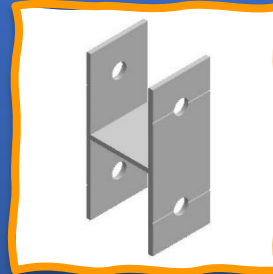
4 Upper Rail Splice

- The longest length of upper aluminum rails which produced from factory could not be longer than 6 meters.
- In the mean time, it will cause difficult transportation and installation for too long in piece.
- Rail splice play roles in joining two mounting rails together for large scale solar panel mounts.



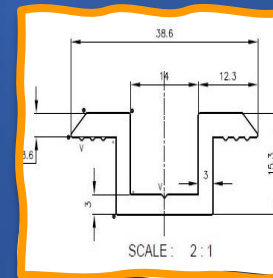
6 H-Type Joint

- The H-shape joint is used to fix the lower rail to the stand structure.
- Its max wind load is 60 m/s.
- This design compatible with most solar modules.



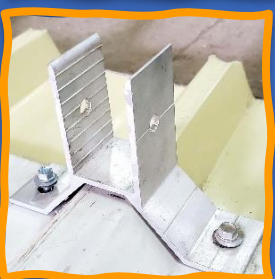
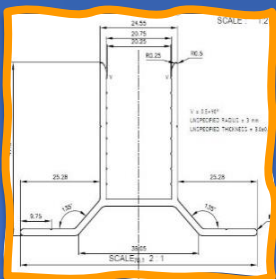
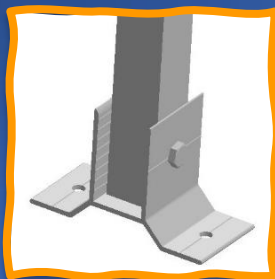
8 Mid Clamp

- It is made of high-quality aluminum, and good corrosion resistance.
- It is set for the installation of framed photovoltaic panels.
- Fastening bolts are made of stainless or Galvanized steel.
- It is suitable for the installation of any roof or ground installation.



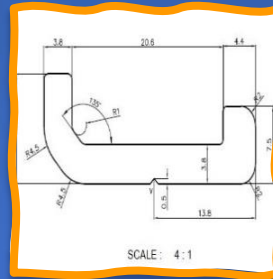
5 Concrete Base

- Concrete base (and corrugated base) are designed for metal or concrete roof installation.
- It can be directly fixed on the roof top.
- The design focus of the system is to simplify installation and reduce installation time and cost.



7 C-Type Clamp

- Aluminum solar panel fixing Clamp.
- This C-shape clamp is used to fix the upper rail to the lower rail.
- It is compatible with most solar modules.



9 End Clamp

- Aluminum end clamp sets, which are applied to 30mm - 40mm framed solar panel.
- It is with natural silver aluminum material.
- Quick & easy installing.
- Anti-corrosive aluminum end clip.

